

# Dashboard

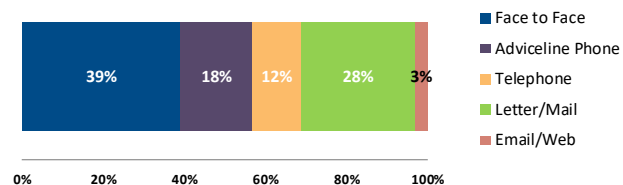
## Lewes District CA Q2 2017-2018 Client Statistics



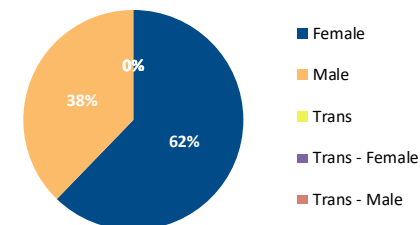
### Key Statistics

Clients	1,137
Advice Issue Codes	2,144
Client Contacts	1,760
Enquiries	1,009

### Client contacts by channel



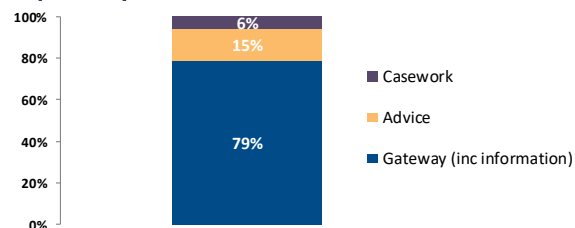
### Gender of Clients



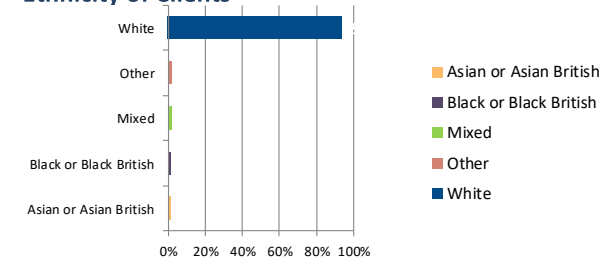
### Financial Outcomes for the period Q2

Income gain	£348,993
Debts written off	£77,472
Repayments rescheduled	£11,659
<b>£438,124 Total</b>	
Debt Under management	£97,357

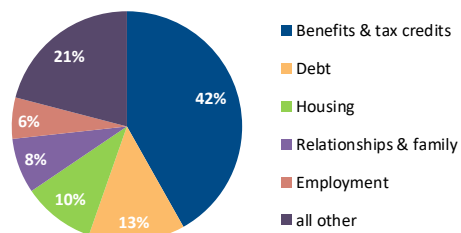
### Enquires by Worklevel



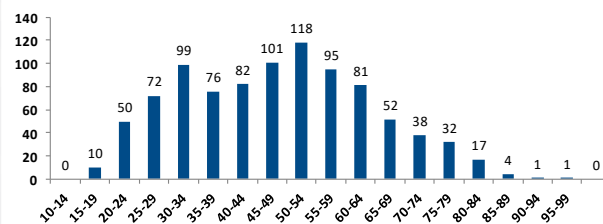
### Ethnicity of Clients



### Advice categories summary



### Age range of clients



### Disability / Long term health (LTH)

